



Remote Control Remo pro

Item number 60522

1. Description

The **Remote control Remo pro**'s colour touch-screen can be used to manually control devices and drives. The possible functions are Up/Down/Stop, On/Off and Dimming. The drives and units can be individually grouped, arranged and named.

Functions:

- Operation via the touch display
- Lithium battery, chargeable via a USB-2.0 Micro-B charger
- Maximum 32 channels (depends on the device with which the remote control is used)
- The touch buttons can be named individually, directly on the device. Additionally, a suitable function symbol can be selected
- The display sequence can be changed. It is also possible to create groups
- Once applied, settings can be transmitted to other **Remo pro** devices via a wireless connection (cloning)

The Remo pro remote control is suitable for drives and users of the following devices:

The device's software version must be appropriate for interaction with the remote control.

Controllers: With a controller, up to 8 channels of the remote control can be used..

- Control units WS1/WS1000 Color, WS1/WS1000 Style, KNX WS1000 Style (version 1.1 and later)
- KNX Touch One (Style)
- Control unit Solexa II

Actuators: Keep in mind that older versions are programmed only via channels 1–8 of the Remo pro.

- Control unit Solexa II (Channel 1-8 from version 3.6)
- Control unit Arexa (Channel 1-8 from version 3.7)
- Ventilators WL400, WL800 and WL-Z, RF-VM fan module (Channel 1-8 from version 1.0)
- RF-Relays (Channel 1-8 from version 2.0, channel 1-32 from version 5.7)
- RF-HE-ST (Channel 1-8 from Version 1.0, channel 1-32 from Version 8.0)
- RF-MSG motor control unit (Channel 1-8 from version 1.0)
- RF-MSG-ST motor control unit (Channel 1-8 from version 1.0, channel 1-32 from Version 4.2)
- RF-MSG(2)-DST motor control unit (Channel 1-32 from version 1.0)
- RF-L Dimmer (Channel 1-8 from version 1.0)



Moisture is harmful to the electronic components of the remote control. You must therefore:

- **Not leave it in the rain**
- **Not leave it outside overnight**
- **Protect it from frost**

1.0.1. Deliverables

- Wireless remote control with integrated battery
- USB cable 0.5 m (USB-A plug to USB-B micro plug)

1.1. Technical specifications

Housing	Plastic
Colour	black
Protection category	IP 40
Dimensions	approx. 64 x 122 x 11 (W x H x D, mm)
Display	colour TFT, capacitive, dimmable, resolution 320 x 480 px
Weight	approx. 100 g
Ambient temperature	operating 0...50 °C, storage -10...+60 °C
Ambient humidity	max. 95 % RH, avoid condensation
Operating voltage	integrated battery 3.8 V DC
Wireless frequency	868.2 MHz
Channels	32 (application depending on the device with which the remote control is used)

The product is compliant with the provisions of EC guidelines.

1.2. Notes on wireless equipment

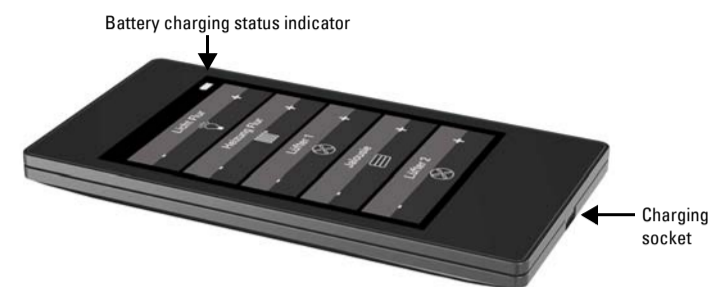
When planning facilities with devices that communicate via radio, adequate radio reception must be guaranteed. The range of wireless control will be limited by legal regulation and structural circumstances. Avoid sources of interference and obstacles between receiver and transmitter, that could disturb the wireless communication. Those would be for example:

- Walls and ceilings (especially concrete and solar protection glazing).
- Metal surfaces next to the wireless participants (e. g. aluminium construction of a conservatory).

- Other wireless devices and powerful local transmitters (e.g. wireless headphones), which transmit on the same frequency (868,2 MHz). Please maintain a minimum distance of 30 cm between wireless transmitters for that reason.

2. First use/set-up

2.1. Loading the battery, transport block



First, charge the integrated battery of the remote control with a standard commercial USB charging device (USB 2.0 Micro B connector). Charging will reset the transport block that is active on delivery. The remote control can be used only once it is connected to the power supply via the charger.

If necessary, the transport block can be reactivated within the **System** menu, see Chapter "System" auf Seite 2.

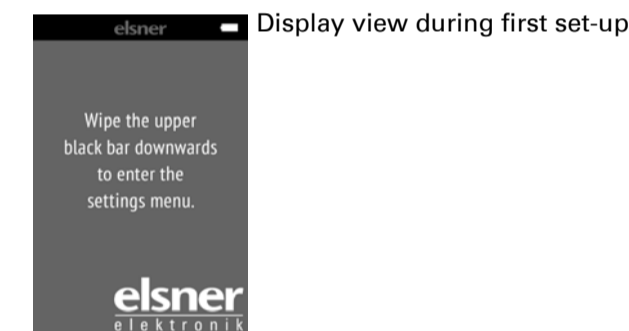
The battery of the device cannot be removed or replaced. When disposing of the device, observe the guidelines for disposing of devices with an integrated battery.

2.2. Protective film

Remove the protective film from the display.

2.3. Set-up procedure

1. Required: set up wireless connections in the *Devices learn/delete* menu. See chapter "Devices learn / delete" auf Seite 1.
2. Optional: adjust the channels individually: e.g. choose their type and name, edit their ordering and groups in the *Wireless channel configuration* menu. See chapter "Wireless channel configuration" auf Seite 1

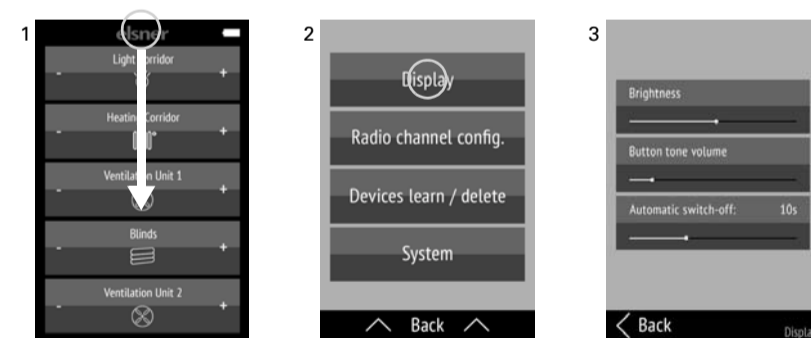


3. Remote control set-up

3.1. Display

Custom adjustment of display brightness, key tone volume and automatic switch-off of the display (2–30 seconds).

Menu: *Display.*



(1) Swipe the screen from the top edge downwards to open the settings menu.

(2) Tap **display**.

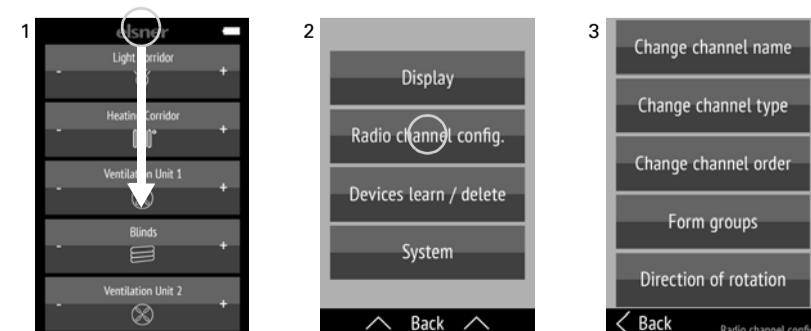
(3) Change the settings by moving the controls.

Tap **Back** at the bottom edge to return to the previous settings menu. Swipe from the bottom edge upwards to close the settings menu.

3.2. Wireless channel configuration

Custom adjustment of channel name, channel type, channel order, groups and rotational direction

Menu: *Wireless channel configuration.*



(1) Swipe the screen from the top edge downwards to open the settings menu.

(2) Tap **Wireless channel configuration**.

(3) Tap the setting that you would like to adjust. Carry out the adjustments as shown later, in Chapters

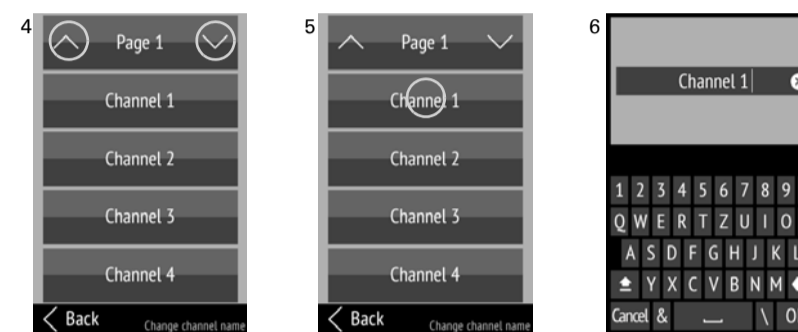
- 3.2.1. *Changing channel name,*
- 3.2.2. *Change channel type, fade channels in/out,*
- 3.2.3. *Changing channel order and*
- 3.2.4. *Forming groups*
- 3.2.5. *Change the motor rotation direction*

Fully faded-in channels and groups are shown in white text. Faded-out channels and groups as well as non-defined groups are shown in grey text.

Tap **Back** at the bottom edge to return to the previous settings menu. Swipe from the bottom edge upwards to close the settings menu.

3.2.1. Changing channel name

Changing the designations of all channels and groups.
Menu: *Wireless channel configuration > Change channel name.*



(4) Tap the **Up** or **Down** arrow on the top **Page** field to change between the pages of the listing.

Holding down a channel button (more than 1 second) in the left or right area sends a movement/switching command, and you will recognise the assigned radio participant.

(5) Tap the channel or group that you would like to adjust.

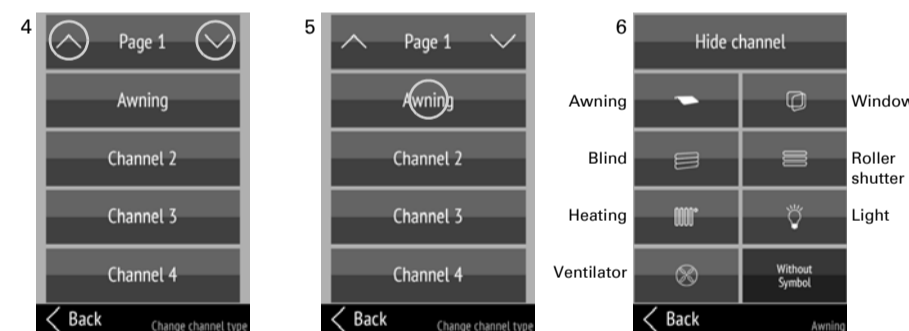
(6) Change the name using the keyboard.

Tap **Cancel** to leave the name changing screen without saving. Tap **OK** to save and return to the channel name overview.

3.2.2. Change channel type, fade channels in/out

Changing the symbols of all channels and groups; fading channels/groups in/out.
Menu: *Wireless channel configuration > Change channel type.*

The function of the channel is detected automatically, only the symbol is adjusted.



(4) Tap the **Up** or **Down** arrow on the **Page** to change between the pages of the listing.

Holding down a channel button (more than 1 second) in the left or right area sends a movement/switching command, and you will recognise the assigned radio participant.

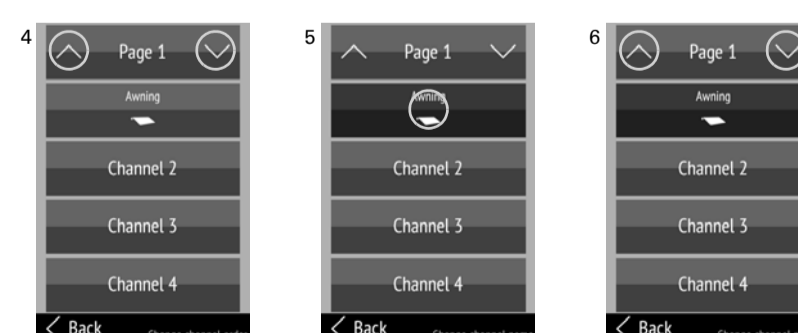
(5) Tap the channel or group that you would like to adjust.

(6) Select the desired symbol or fade the channel out. The selected field will become darker.

The faded-out channels are shown as an unlabelled field without a function on the operation pages.

3.2.3. Changing channel order

Changing the display order of all channels and groups.
Menu: *Wireless channel configuration > Change channel order.*



(4) Tap the **Up** or **Down** arrow on the top **Page** field to change between the pages of the listing.

Holding down a channel button (more than 1 second) in the left or right area sends a movement/switching command, and you will recognise the assigned radio participant.

(5) Tap the channel or group that you would like to move.

(6) As long as the channel/ group is selected, it can be shifted with the **Up** and **Down** arrows in the **Page** field at the top edge of the screen. Faded-out and unused channels are deliberately represented as empty spaces: to structure the operation pages.

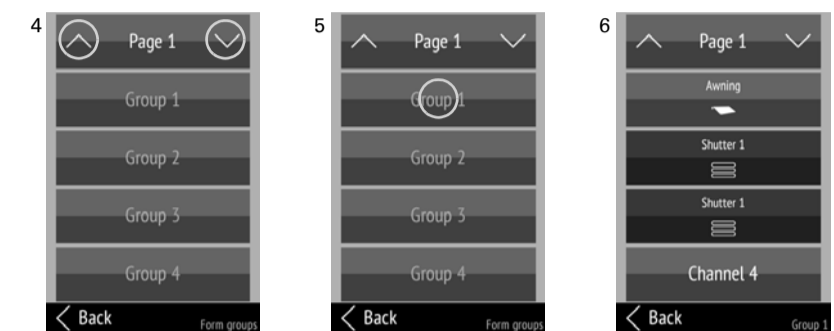
Tap on the channel/group again to confirm the position.

3.2.4. Forming groups

Forming operation groups
Menu: *Wireless channel configuration > Form groups.*



ATTENTION!
Only drives or devices with the same function can be assigned together in groups! E.g. multiple shutters OR multiple lights, but never a combination of different types.



(4) Tap the **Up** or **Down** arrow on the top **Page** field to change between the pages of the listing.

Holding down a channel button (more than 1 second) in the left or right area sends a movement/switching command, and you will recognise the assigned radio participant.

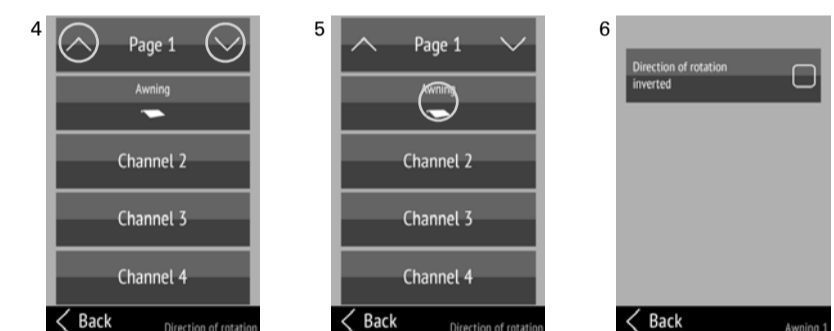
(5) Tap a group. The name of groups that have not been used yet is shown in grey.

(6) Tap the channels that need to be placed in this group to select them. Selected fields are marked with a darker colour. Tap a selected channel to deselect it.

3.2.5. Change the motor rotation direction

Change the motor rotation direction of each channel.
Menu: *Wireless channel configuration > motor rotation direction.*

The motor rotation direction can be changed in the software of the **Remote control Remo pro**, without having to change anything in the electrical installation. As a result, the running direction (up/down) can be corrected. For channels with a light or a heater On/Off is reversed. For fans, +/- is reversed.



(4) With tapping the **Up** or **Down** arrow on **Page**, you can switch between the pages of the listing.

Longer holding of a channel button in the left or right area (longer than 1 second) sends a drive / switching command and you recognize the assigned radio subscriber.

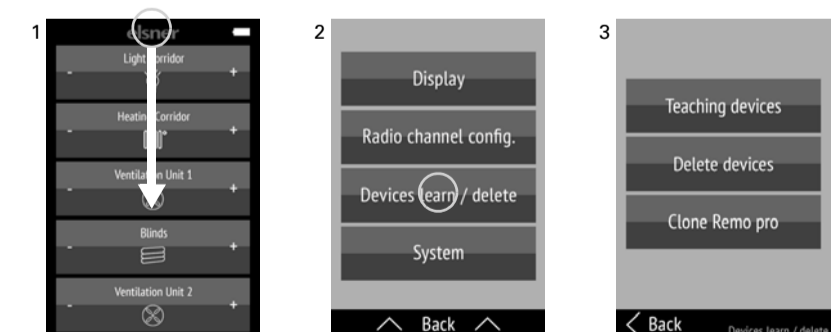
(5) Tap the channel you want to adjust.

(6) By tapping on the button, you set the check mark in "reverse direction" or select it again.

3.3. Devices learn / delete

Teaching and deleting wireless actuators or wireless channels of a control system; cloning settings.

Menu: *Devices learn / delete.*



(1) Swipe the screen from the top edge downwards to open the settings menu.

(2) Tap **Devices learn / delete**.

(3) Tap on the process that you would like to perform. Proceed as shown indicated in Chapters

- 3.3.1. *Teaching devices,*
- 3.3.2. *Deleting devices and*
- 3.3.3. *Cloning Remo pro*

Tap **Back** at the bottom edge to return to the previous settings menu, until you reach the start page. Swipe from the bottom edge upwards to close the settings menu.

3.3.1. Teaching devices

Setting up wireless connections.

Menu: *Devices learn / delete > Teaching devices.*

(4) Tap the device type that you would like to teach.



WS1, WS1000, Touch One control units:

Teaching the remote control for the following control units: *WS1 Color, WS1 Style, WS1000 Color, WS1000 Style, KNX WS1000 Style, KNX Touch One, KNX Touch One Style.*

(5) Bring the control unit into the learning readiness mode: Menu *System > Installation > Wireless connection > Learning.*

Please also follow the instructions in the control system manual.

(6) Tap **Find devices.**



(7) As soon as the wireless connection is set up, the display of the remote control will show the message 'Device found'.

In the control menu *System > Installation > Wireless connection > Status* you can set up a name for the remote control and assign devices and drives to specific channels. With the controller, up to 8 channels of the remote

Control unit Solexa II:

Teaching the remote control with the Solexa II control unit.

(5) Bring the control unit into the learning readiness mode: Menu *Base settings > LER.*

Please also follow the instructions in the control system manual.

(6) Tap **Find devices.**



(7) As soon as the wireless connection is set up, the display of the remote control will show the message 'Device found'.

The assignment of an output to a remote control channel takes place in the control settings, in the base settings of the corresponding outputs in the menu *Base setting > OUP X > SP X > INP*

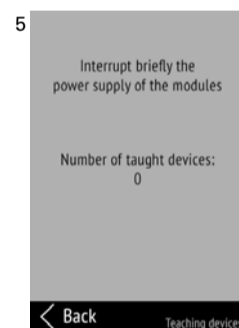
With the controller, up to 8 channels of the remote

Control units Solexa, Arexa:

Setting up the wireless connection with Solexa and Arexa control units.

(5) Briefly interrupt the power supply of the Solexa/Arexa weather station (switch fuse on/off). This teaches the remote control automatically.

(6) The devices and drives available for the control unit are taught on the closest free channels of the remote control. The number of devices taught is displayed.

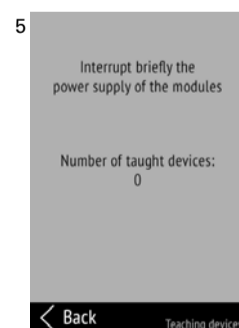


Other:

Setting up a wireless connection with the *WL400, WL800, WL-Z ventilators and RF-MSG, RF-Relay, RF-HE and RF-L (dimmer) wireless modules.*

(5) Briefly interrupt the power supply of the modules (switch fuse on/off). The modules send a 'Teach' signal every 10 seconds for 5 minutes after connecting the power. This teaches the remote control automatically.

(6) The found devices and drives unit are taught on the closest free channels of the remote control. The number of devices taught is displayed.



3.3.2. Deleting devices

Deleting wireless connections.

Menu: *Devices learn / delete > Delete devices.*

Free channels (including deleted ones) are shown in grey text.

Configure the channel order again after you delete channels (see "Changing channel order" auf Seite 1). The deleted channels will otherwise appear as empty spaces on the operation pages.

(4) Tap the device type that you would like to delete.



WS1, WS1000, Touch One control units:

Delete the remote control in the control system menu:

System > Installation > Wireless connection > Delete.

Please also follow the instructions in the control system manual. Nothing must be changed in **Remo pro**.

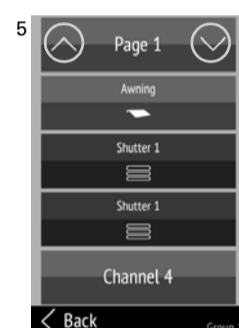
Control unit Solexa II:

Delete the remote control in the control system menu:

Base setting > StAt.

Please also follow the instructions in the control system manual. Nothing must be changed in **Remo pro**.

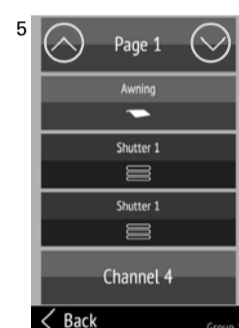
Solexa, Arexa OR other control units:



(5) Tap the **Up** or **Down** arrow on the top **Page** field to change between the pages of the listing.

(6) Tap the channel that you would like to delete.

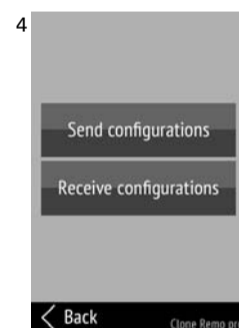
(7) Briefly interrupt the power supply of the Solexa/Arexa weather station or the modules (switch fuse on/off). The corresponding channel of the remote control is deleted. The message 'Device deleted' is displayed as confirmation.



3.3.3. Cloning Remo pro

Transmitting settings from one **Remote control Remo pro** to another **Remo pro**.

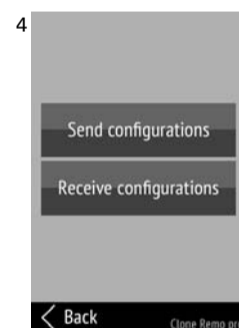
Menu: *Devices learn / delete > Clone Remo pro.*



(4)+(5) Select **Send configuration** to transmit the settings applied on this device with all wireless connections to a second device.

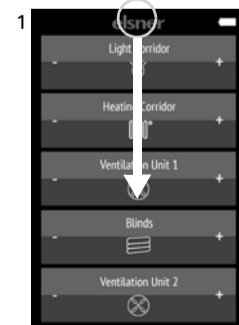
(6) Select **Receive configuration** on Device 2. Tap **Start transmission**.

During the transmission, the messages 'Data are being transmitted' (Device 1) and 'Receiving data' (Device 2) are displayed. Both devices display the message 'Cloning process complete' when the transmission is successful.



3.4. System

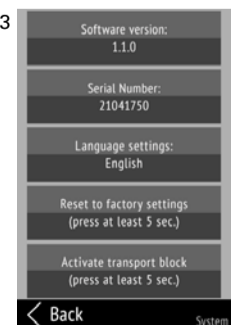
Information about the software version and serial number; resetting the remote control to factory defaults and activating the transport block; setting the language. Menu: *System.*



(1) Swipe the screen from the top edge downwards to open the settings menu.

(2) Tap **System**.

(3) You can read the serial number and software version, and perform the following actions:



Setting the language:

Tap **Language settings** and select the desired language (German, English, French, Italian or Spanish).

Factory defaults:

- ATTENTION!**
- Resetting to factory defaults deletes all custom settings!
 - All wireless connections must be deleted manually before resetting to factory defaults.
- Otherwise, when teaching the device again, double allocation of channels can occur.

Hold down **Reset to factory defaults** for at least 5 seconds to delete the settings saved on the remote control.

Transport block:

Hold down **Activate transport block** for at least 5 seconds to prepare the remote control for transport. The transport block prevents the device from being activated when it is moved. To unblock, connect the remote control to the power supply using a charging cable.

Tap **Back** at the bottom edge to return to the previous settings menu. Swipe from the bottom edge upwards to close the settings menu.

4. Using the remote control

4.1. Automatic switch-off

The display of the remote control switches on when the device is moved (e.g. if the remote control is picked up) and switches off again after several seconds to save energy. The time until switch-off can be set in the *Display* menu (see Chapter "Display" auf Seite 1).

4.2. Display

The display shows all taught devices and drives, as well as groups thereof. The order can be changed in the *Wireless channel configuration > Change channel order* menu (see Chapter "Changing channel order" auf Seite 1).

If more than five drives/devices are taught, the display uses several pages to show them. Use the **Up/down** arrow buttons to change page.

4.3. Operating drives and devices

Tap the button of the device or drive in the **+** area (right side of the button) or **-** (left side of the button).

For some functions, the buttons are equipped with an automatic timer. This is because there is a difference between a short tap (less than 1 second, short sound signal) and a longer tap (more than 1 second, until a higher-pitched confirmation sound signal is played).

4.3.1. Moving drives (Up/Down)

The buttons are equipped with an automatic timer.

A short tap triggers a short **step movement command**, e.g. for exact positioning of a shade.

A longer tap triggers an automatic **movement until the end position**. A short tap of the button for the opposite direction stops the movement.

4.3.2. Switching devices on/off

Tap + to switch on.

Tap - to switch off.

4.3.3. Dimming

The buttons are equipped with an automatic timer.

A shorter tap on **+** switches the device with the last dimming value on, tapping on **-** switches it off.

A longer tap on **+** adjusts the light to a brighter setting, holding **-**, to a darker setting. If you release the key, the brightness stops changing.

4.3.4. Controlling WL400/WL800 ventilator

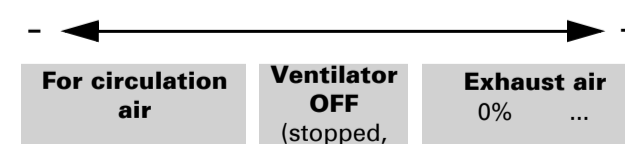
The buttons are equipped with an automatic timer.

A short tap changes the rotation speed in 10% increments (for a total of 10 ventilation levels).

Holding changes the rotation speed continuously. If you release the key, the speed stops changing.

Note: Radio interference can on rare occasions cause the speed to continue changing after the key is released. In such case, briefly tap the opposite direction key again to stop it.

Ventilation modes:



Each time the **OFF** state is reached, the speed change stops automatically, so that a direct change between exhaust and circulation modes is impossible.

5. Care and maintenance

Please carefully clean the remote control with a display cleaning cloth. Do not use detergent.

5.1. Troubleshooting

Problem: The display is off, the remote control does not react:

Cause	Procedure
Transport block active	Please connect the remote control to the power supply using a charger. This deactivates the lock.
Battery not charged	Use a charger to charge the remote control. The charge status is shown with the battery symbol at the top right corner of the operation pages.

Problem: The display is on, the device/drive does not react to button presses:

Cause	Procedure
Wireless contact has been lost, transmitter is too far away from the receiver	Choose another location
No voltage to receiver unit or faulty receiver unit	Switch on the receiver unit (e.g. the control unit). Should wireless contact still not be established, please contact Customer Service