

Fix

Mounting Arm for weather stations and sensors

Technical specifications and installation instructions

Item numbers
30127 (RAL 9003)
30128 (plain)



1. Description

With the **Mounting Arm Fix** weather stations and sensors can be flexibly fitted to the wall. Following sensors can be fitted to the mounting arm:

- Weather stations Suntracer KNX (basic), Suntracer KNX-GPS and KNX-weather sensors
- Weather station for the Solexa, Solexa II, Arexa controls
- Weather station P03-RS485 and RS485-weather sensors
- P03-modbus weather stations
- Weather stations Suntracer KNX sl (including light and basic) and KNX sl-weather sensors
- Weather station P04i-GPS (WS1/WS100 Color/Style and KNX WS1000 Style controls)
- Weather stations P04-RS485
- Sensors Vari KNX

1.0.1. Scope of delivery

- Mounting arm with plate for wall installation
- Sensor mounting plate, can be swivelled. Anchoring with countersunk screw DIN 7991 M8x10 stainless steel, Schnorr washer norm type N0110 S8
- 2x cylinder head screw DIN 912 M4x20 stainless steel version for Vari
- 2x cylinder head screw DIN 912 M4x25 stainless steel version for P04/Suntracer sl
- 2x cylinder head screw DIN 912 M4x8 stainless steel version for P03/Solexa/Suntracer
- 2x washers DIN 125 4.3 stainless steel version (is needed for all variants)

1.1. Technical specifications

Colour	Available in white RAL 9003 powder-coated finish or untreated aluminium
Total length	approx. 430 mm
Weight	approx. 190 g

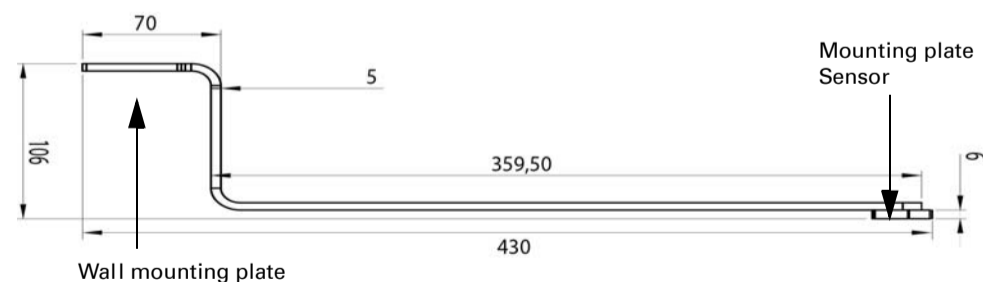
The product is compliant with the provisions of EU guidelines.

2. Assembly

Only use suitable fixing material (screws, dowels) to fix the wall installation plate and make sure that the subsurface is stable.

2.1. Dimensions

Abb. 1



Wall mounting plate:

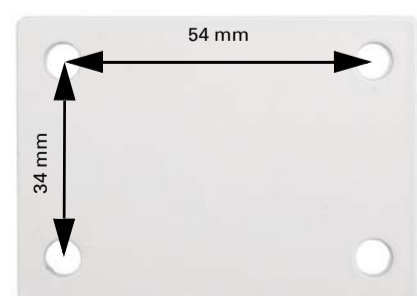


Abb. 2
Hole diameter 6.2 mm

2.2. Affix sensor

2.2.1. Affix sensor mounting plate

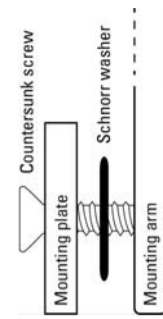


Abb. 3
(Schema sequence screw fastening)

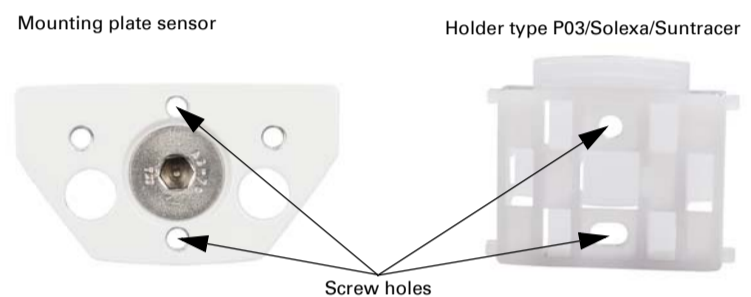
Screw the sensor mounting plate onto the boom with the countersunk screw DIN 7991 M8x10. Place the Schnorr tooth lock washers between the mounting plate and the boom

2.2.2. Type P03/Solexa/Suntracer



Abb. 4
For mounting use the cylinder head screws DIN 912 M4x8 and place the DIN 125 washers under the screw heads.

Abb. 5



Mounting plate sensor

Holder type P03/Solexa/Suntracer

Screw holes



Abb. 6
Slide the weather station housing from above on to the holder mounted on the plate. In doing this, the studs in the holder must click into the tracks on the casing.

2.2.3. Type P04/Suntracer sl

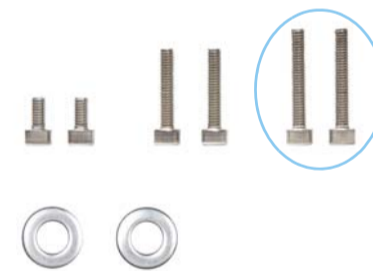
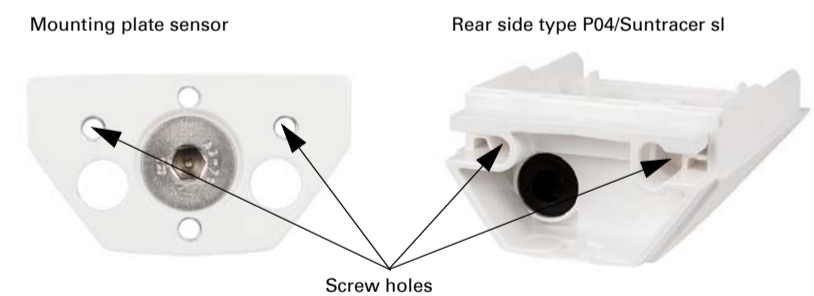


Abb. 7
For mounting use the cylinder head screws DIN 912 M4x25 and place the DIN 125 washers under the screw heads.

Abb. 8



Mounting plate sensor

Rear side type P04/Suntracer sl

Screw holes

The holes in the lower part of the housing must be carefully broken out for the screw fastening. The lower part of the housing is screwed together with the sensor mounting plate from the inside.

2.2.4. Type P04/Suntracer sl - new connection system 2018

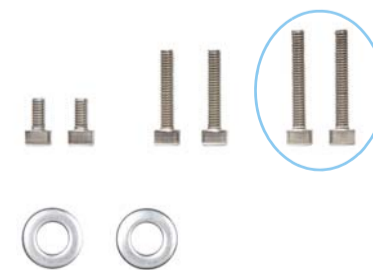
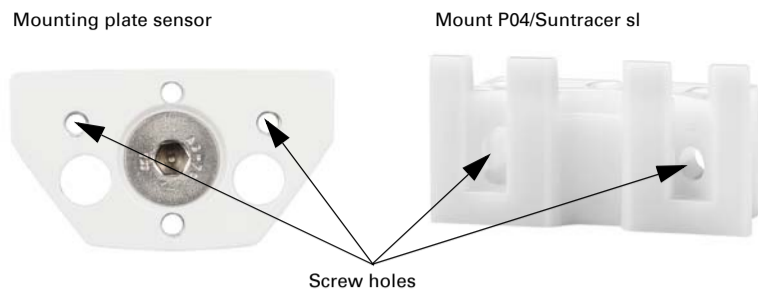


Abb. 9
For mounting use the cylinder head screws DIN 912 M4x25 and place the DIN 125 washers under the screw heads.

Abb. 10



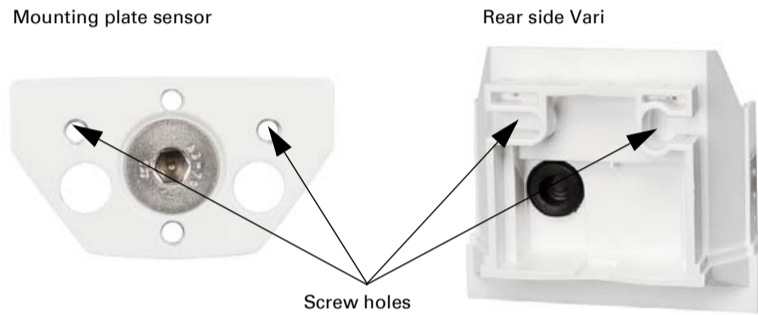
Lower the device onto the mount. Tighten the screw of the mount to secure the device.

2.2.5. Type Vari



Abb. 11
For mounting use the cylinder head screws DIN 912 M4x20 and place the DIN 125 washers under the screw heads.

Abb. 12



The holes in the lower part of the housing must be carefully broken out for the screw fastening. The lower part of the housing is screwed together with the sensor mounting plate from the inside.

2.2.6. Installation examples

Abb. 13



Sensor offset upwards.

Abb. 14



Sensor offset downwards.

Abb. 15



Sensor offset to the right (or the left).